

Products — Two Bearing Generators

Model AB50 5000/4000 Watts
 Model AB60 6000/5000 Watts

Totally brushless with capacitor, copper windings, bi-directional rotation, <6% distortion.

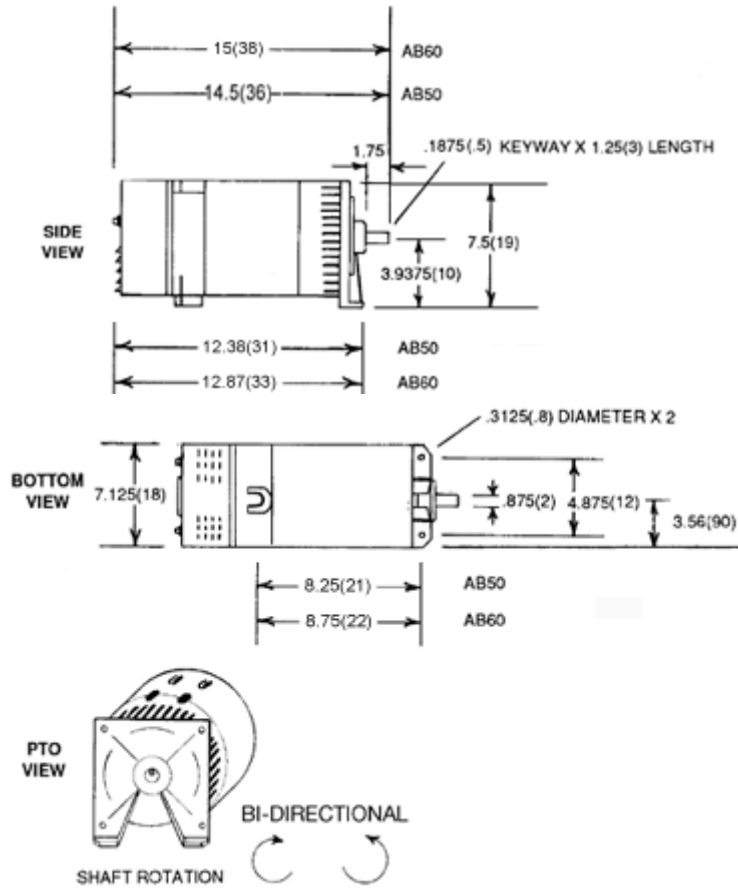


STANDARD FEATURES

MODEL	AB50	AB60
120V DUPLEX 20A, 5-20R	1	1
240V 20A, L14-20R	1	1
CIRCUIT BREAKERS	YES	YES
VOLTMETER	YES	YES
SHAFT DIAMETER	.875"(22)	.875"(22)
KEYWAY	.1875(4.7)	.1875(4.7)
SHAFT ROTATION FROM PTO VIEW	BI-DIRECTIONAL	BI-DIRECTIONAL
SHAFT SPEED RPM	3600	3600
REQUIRED PULLEY (NOT SUPPLIED)	SINGLE	SINGLE

IMPORTANT - FOR INSTALLATION CONSULT OWNER'S MANUAL.
 ALL MODELS DESIGNED FOR HORIZONTAL OPERATION ONLY.

MODEL	WATTS			VOLTAGE	AMPS RATED	HERTZ	PHASE	WIRE	MINIMUM REQUIRED ENGINE H.P.	REQUIRED TORQUE FT-LBS	REQUIRED GENERATOR SHAFT RPM
	MAXIMUM	RATED									
AB50	5000	4000		120/240	33.3/16.7	60	1	4	8	12.5	3600
AB60	6000	5000		120/240	41.6/20.8	60	1	4	11	16.5	3600
MODEL	NET			PACKAGED			NET WEIGHT	PACKAGED WEIGHT	CUBIC FT.		
	L	W	H	L	W	H					
AB50	14.5(36)	7.125(18)	7.5(19)	18.75(47)	9.6(24)	9(23)	42(19)	53(24)	1.0		
AB60	15(38)	7.125(18)	7.5(19)	18.75(47)	9.6(24)	9(23)	49(22)	56(25)	1.0		



CHANGES: All specifications and dimensions are subject to change without notice and there is no obligation to make changes in units previously sold. All units are manufactured to the highest engineering standards consistent with the industry.

GENERATOR SELECTIONS: When selecting generator be sure that the unit takes care of present total requirements and your anticipated needs. Motor loads require 3 to 4 times wattage (or amperage) ratings on nameplate.

RATINGS: Apply to altitudes up to 1000 feet, standard cooling, normal ambients and gasoline fuel. Reduce ratings 3-1/2% for each 1000 feet above sea level and 1% for each 10° Fahrenheit rise above 60° Fahrenheit. Connection of a generator to a home or building requires a transfer switch. Consult a qualified technician.

Copyright © 2013 [Wanco Inc.](#) All rights reserved. [Disclaimer Information](#)

Distributed by

Colorado Standby, LLC
4758 N. Chestnut Street
Colorado Springs, CO 80907
866-888-6111, fax 719-533-1928